

4

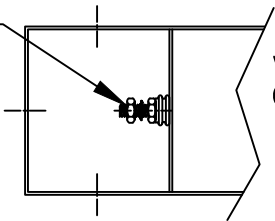
3

2

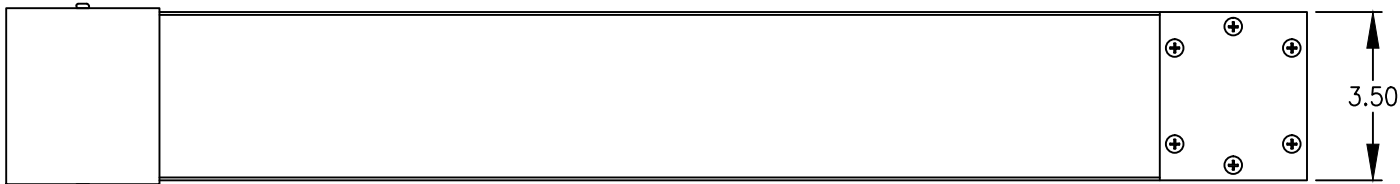
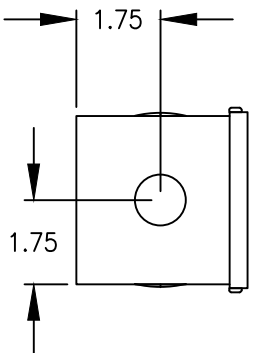
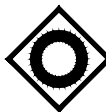
1

REVISIONS			
REV	DESCRIPTION	DATE	APPVD
-	INITIAL RELEASE	05/18/17	JR

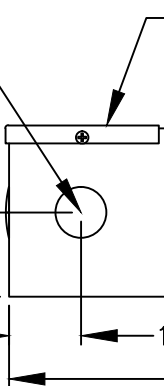
1/4-20 UNC TERMINAL STUD, WITH HEX NUT AND LOCK WASHER TYP. BOTH ENDS



VIEW SHOWN WITH COVER REMOVED

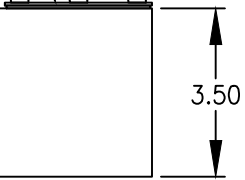


.875 DIA HOLE WITH PLUG TYP. 3 PLCS



REMOVABLE COVER

REMOVABLE COVER WITH RF/EMI GASKET



1.75

1.50

27.00

3.50

3.50

RATING: 33A 125VDC

WARNING
THIS DOCUMENT CONTAINS TECHNICAL DATA WHOSE EXPORT IS RESTRICTED BY THE INTERNATIONAL TRAFFIC IN ARMS REGULATIONS (I.T.A.R. 22 CFR PARTS 120-130), THE ARMS EXPORT CONTROLS ACT (TITLE 22, U.S.C., SEC 2751, ET SEQ), OR THE EXPORT ADMINISTRATION ACT OF 1979, AS AMENDED, TITLE 50, U.S.C. APP. 2401 ET SEQ. VIOLATIONS OF THESE EXPORT LAWS ARE SUBJECT TO SEVERE CRIMINAL PENALTIES. DISSEMINATE IN ACCORDANCE WITH PROVISIONS OF DD DIRECTIVE 5230.25.

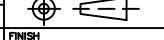
THE INFORMATION CONTAINED HEREIN IS CONFIDENTIAL AND PROPRIETARY INFORMATION OF EMS DEVELOPMENT CORP. AND IS A TRADE SECRET OF EMS DEVELOPMENT CORP. WHICH SHALL NOT BE DISCLOSED TO ANY THIRD PARTY OR COPIED WITHOUT THE EXPRESS PRIOR WRITTEN CONSENT OF EMS DEVELOPMENT CORP.. THIS CONFIDENTIAL AND PROPRIETARY INFORMATION IS TO BE USED ONLY FOR THE SOLE PURPOSE AGREED TO BY EMS DEVELOPMENT CORP..

INTERPRET DRAWING IAW DOD-STD-100 UNLESS OTHERWISE SPECIFIED DIMENSIONS ARE IN INCHES

TOLERANCES
DECIMAL
2 PLS ±.03 3 PLS ±.015
ANGLES ± 1/2°

DO NOT SCALE DRAWING

THIRD ANGLE PROJECTION



FINISH

DRAWN	JWS	05/18/17
CHECKED		
PROJ ENGR	JWS	05/18/17
QUALITY		
MFG ENGR		
PROJ MGR	JR	05/18/17

MATERIAL	
DRAWING LOCATION	OLINE/RF/17049

Ultra **EMS DEVELOPMENT CORPORATION**
95 HORSEBLOCK ROAD, YAPHANK, N.Y. 11980

**FILTER OUTLINE
TYPE RF17049**

SIZE	CAGE CODE NO.	DWG. NO.	REV.
A	13619	OD-RF17049	-
SCALE: NONE		SHEET 1 OF 1	

DWG. NO. OD-RF17049
1 REV.

4

3

2

1